





## Introduction

# At a glance

International supplying network in  
architectural aluminum , aluminum  
commodities and general building materials

[www.aluco.gr](http://www.aluco.gr)

### 1 EUROPEAN

windows and doors  
systems, engineering  
and manufacturing

### 2 200

experience in more than  
200 realized projects

### 3 25

years of accumulated  
experience

### 4 OFFICES

in Greece, network in  
more than 10 countries



1

## ATHENS

Offices  
Main architectural system  
supply and manufacturing  
R&D, Testing Chamber &  
Lab

2

## USA/CANADA, SOUTH AMERICA

Main Commercial  
activity and local  
partners

3

## EUROPE

Sourcing of niche and  
complimentary products  
as well as commodities  
Supply of selected  
products and services

4

## ASIA, MIDDLE EAST

Sourcing of niche and  
complimentary products  
as well as commodities  
Supply of selected  
products and services

## About Us

ALUCO is an strategic supplier of various components and solutions, products and services in aluminum applications, in the architectural and industrial sector

**10** countries \*

**Projects realized in  
more than 10  
countries**

We have an international network of manufacturing partners and suppliers of building materials, in aluminum and other products

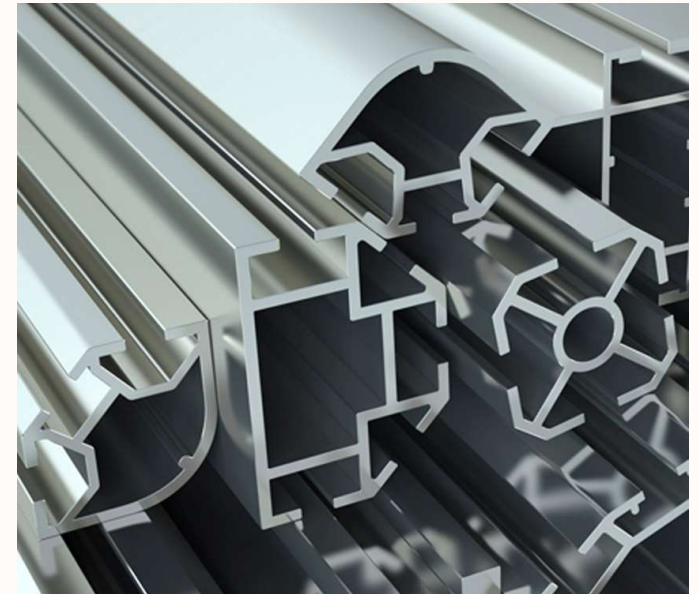
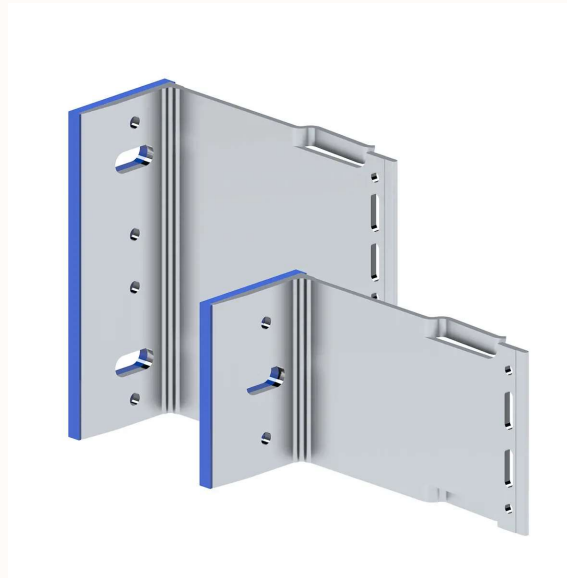




## PRODUCTS

# Aluminum Extrusions & post extrusion treatment

- More than 20 years combined experience in extruded aluminum.
- MF/ Powder Coated AAMA 2603-2604-2605/ Wood imitation/Anodizing
- Various types of Machinings (cut/drill/milling/CNC/punching etc.)
- Aluminum Parts
- Design assist/value engineering in custom solutions
- International sourcing from trusted partners.
- Handling/logistics
- Inspection and QA/QC by own team.



PRODUCTS

# Architectural systems

**DESIGNED TO MEET GREAT  
EXPECTATIONS**

- MINIMAL DESIGN SYSTEMS
- DOORS & WINDOWS
- FAÇADE SYSTEMS
- SECURITY SYSTEMS
- SPECIAL PRODUCTS
- SUPPLEMENTARY PRODUCTS.



## PRODUCTS

# Minimal Design systems

## HYLINE SLIDING SYSTEMS

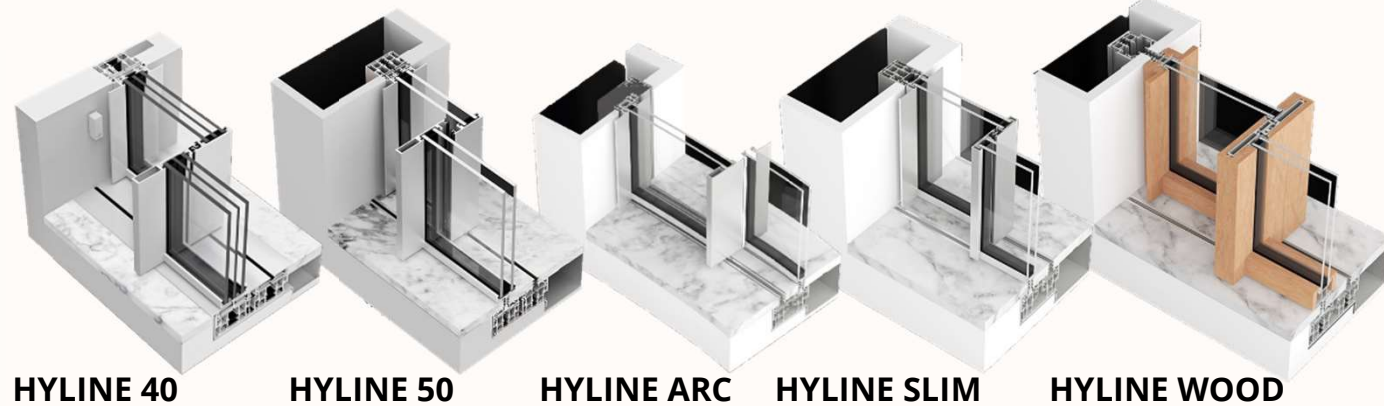
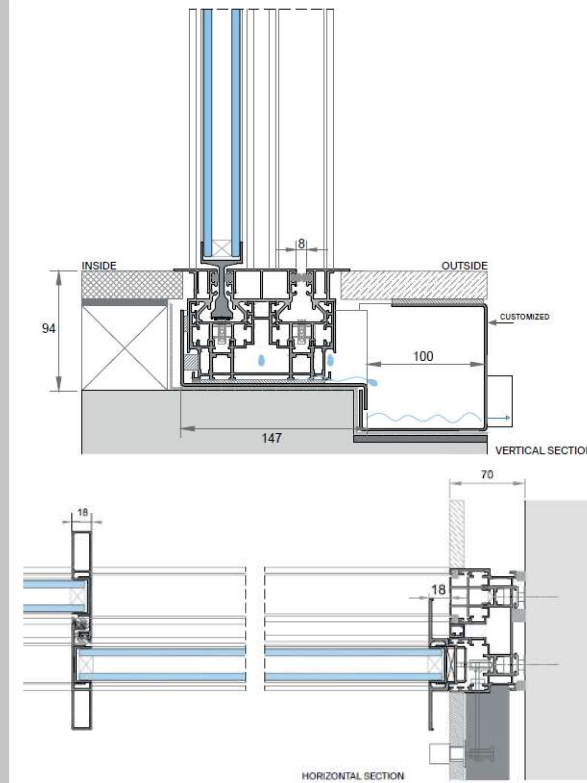
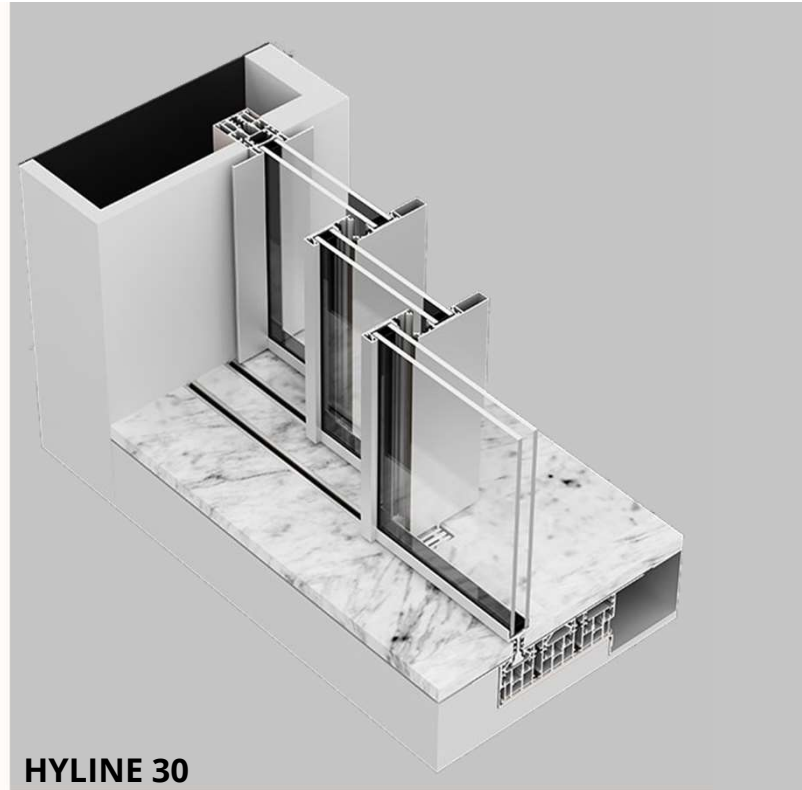
- MINIMAL DESIGN SYSTEMS

SELECTION depending on **sash width**:

- 30mm
- 40mm
- 50mm

Selection depending on **type**:

- Slim (hidden sash/interlock)
- Wood
- Arc.

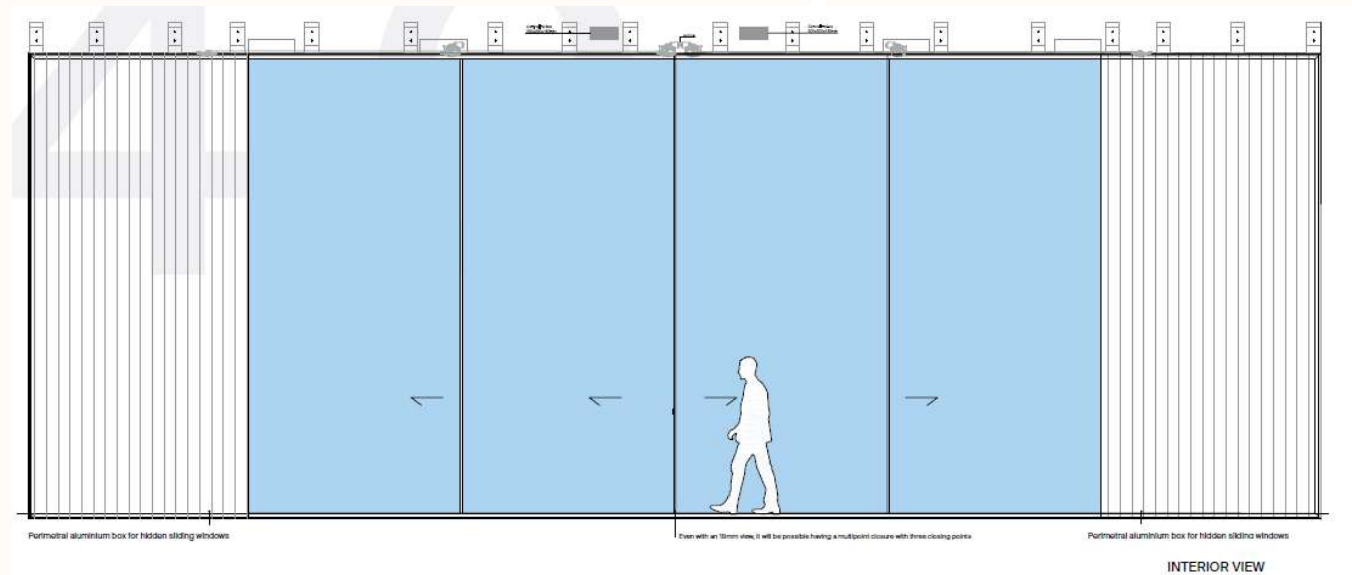


## PRODUCTS

# Minimal Design systems

## HYLINE SLIDING SYSTEMS SCALE

- MINIMAL DESIGN SYSTEMS



## PRODUCTS

# Minimal Design systems

## OTHER MINIMAL SLIDING SYSTEMS

- MINIMAL DESIGN SYSTEMS

SELECTION depending on **sash width:**

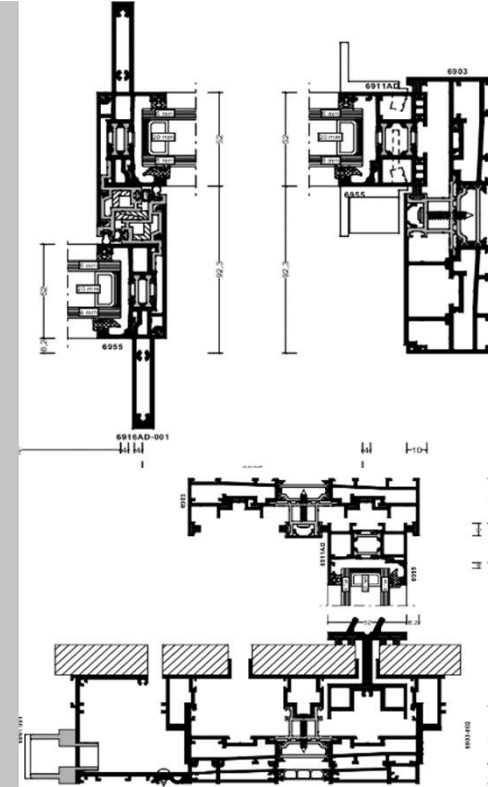
- ALC52 flat/ invisible rail



**ALCS52 FLAT RAIL**



**ALC52 INVISIBLE RAIL**





## PRODUCTS

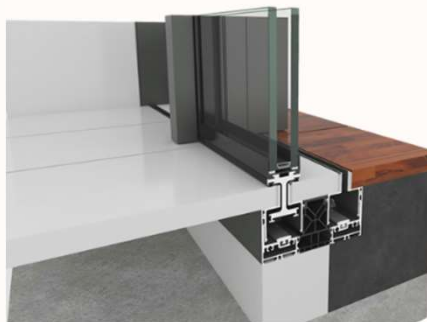
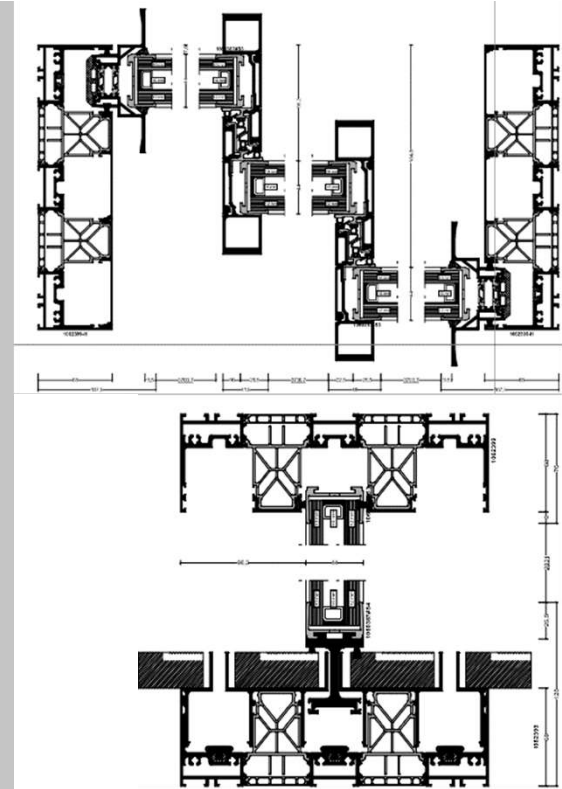
# Minimal Design systems

## OTHER MINIMAL SLIDING SYSTEMS

- MINIMAL DESIGN SYSTEMS

SELECTION depending on **sash width:**

- ALS44 flat/ invisible rail



INVISIBLE RAIL



## PRODUCTS

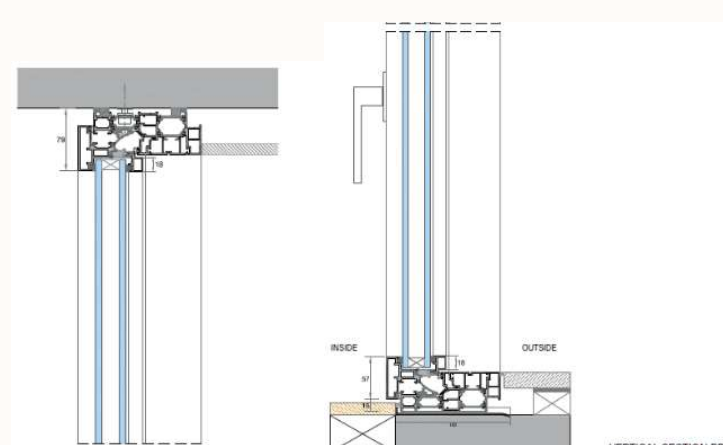
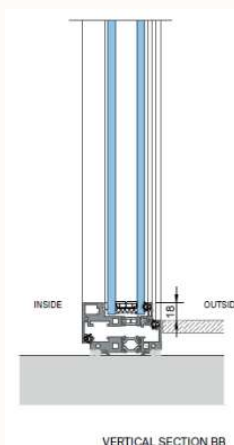
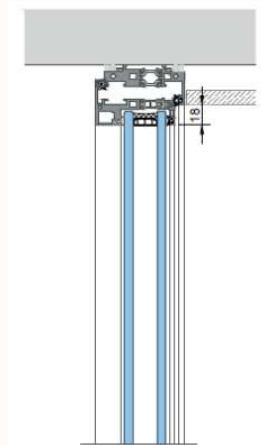
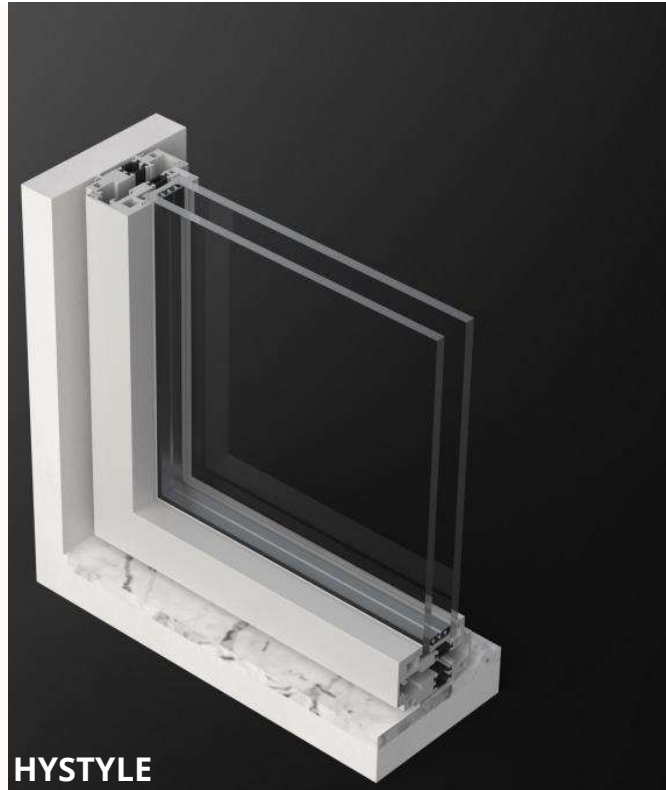
# Minimal Design systems

## HYLINE MINIMAL OPERABLE SYSTEMS

- MINIMAL DESIGN SYSTEMS

SELECTION depending on **sash width:**

- HYSTYLE
- HY WIN+



## PRODUCTS

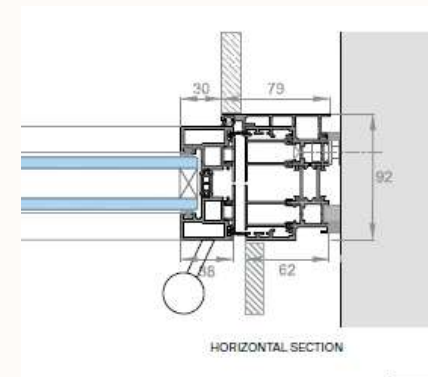
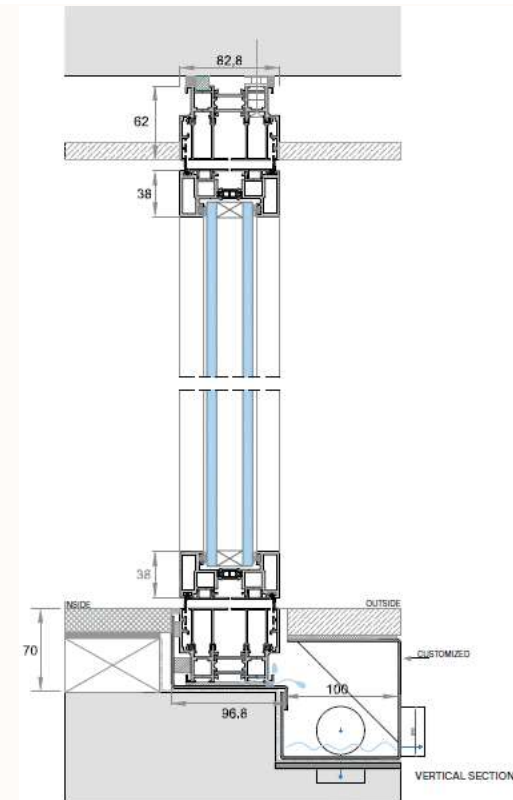
# Minimal Design systems

## HYLINE MINIMAL OPERABLE SYSTEMS

- MINIMAL DESIGN SYSTEMS

SELECTION depending on **sash width**:

- HYLINE PIVOT



## PRODUCTS

# Minimal Design systems

## HYLINE MINIMAL OPERABLE SYSTEMS

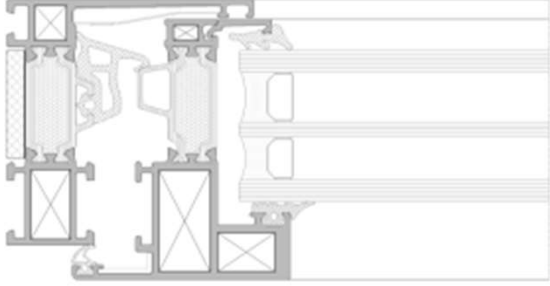
### • MINIMAL DESIGN SYSTEMS

SELECTION depending on **sash width:**

- ALCH68

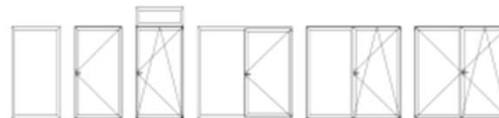


**ALCH 68**

	
<b>Performance</b>	
Air Permeability:	up to class 4
Watertightness:	up to class E1200
Resistance to wind load:	up to class C4/B4

### Typologies

- Turn, tilt & turn, tilt, fixed, door-height window
- Single & double leaf



### Technical features

Frame width: 68mm
Frame height: 68mm
Section height (f+l): 78mm
Glazing infill: up to 37mm
Max. vent height: 2.500mm
Max. vent width: 1.200mm

### Hardware

Concealed hinges
Euro-groove & PVC-groove
Multiple locking points
Max. vent weight: 150kg

### Surface treatment

QUALICOAT – Powder coating
QUALANOD – Anodising
QUALIDECO – Wood effects



### Production certificates

- EN ISO 9001
- EN ISO 14001
- OHSAS 18001

## PRODUCTS

# Architectural systems

## SLIDING SYSTEM ALCS70

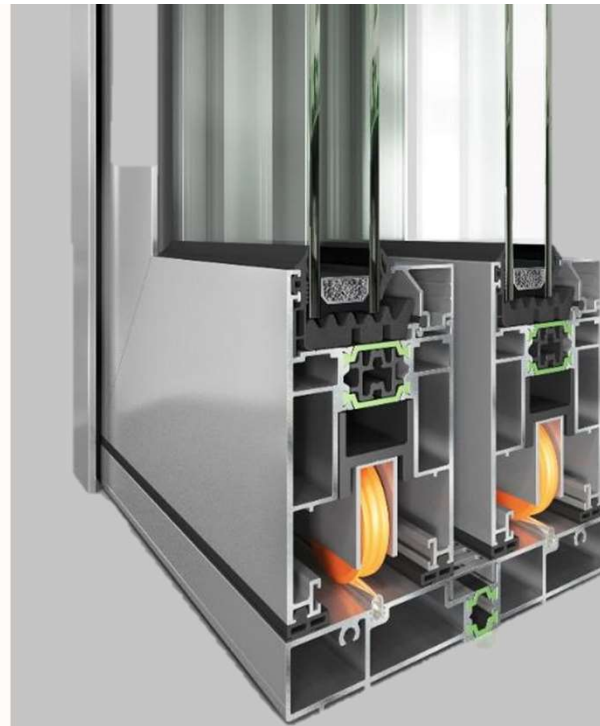
### • DOORS & WINDOWS

SELECTION depending on **operation**:

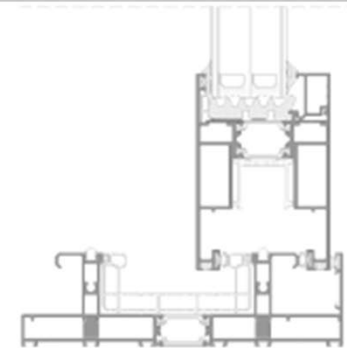
- Lift & Sliding (LS)

Selection depending on **rail**:

- Regular
- flat



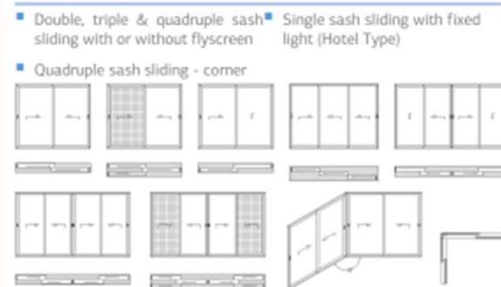
ALCS 70



### Performance

Air Permeability:	up to Class 4
Watertightness:	up to class E750
Resistance to wind load:	up to class C5
Thermal transmittance (U <sub>f</sub> ):	from 1,7 W/(m²K)
Acoustic performance:	up to 45 dB

### Typologies



### Technical features

Sash width: 70mm
Sash height: 103mm
Rail height: 25mm / 48mm
Interlock width: 54mm / 113mm
Glazing infill: 25 + 52 mm
Max. sash height: 3.300mm
Max. sash width: 3.300mm

### Hardware

Lift & slide mechanism
Max. sash weight: 440kg
Single or multiple point lock

### Surface treatment

QUALICOAT – Powder coating
QUALANOD – Anodising
QUALIDECO – Wood effects



### Production certificates

- EN ISO 9001
- EN ISO 14001
- OHSAS 18001

## PRODUCTS

# Architectural systems

## SLIDING SYSTEM ALCS50

### • DOORS & WINDOWS

SELECTION depending on **operation**:

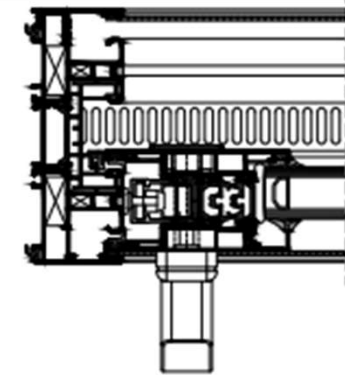
- Sliding
- Lift & Sliding (LS)

Selection depending on **rail**:

- Regular
- Flat rail



ALCS 50



### Performance

Air Permeability:	up to <b>Class 4</b>
Watertightness:	up to <b>Class E1200</b>
Resistance to wind load:	up to <b>Class C3</b>
Thermal transmittance (U <sub>i</sub> ):	from <b>2.0 W/(m²K)</b>
Acoustic performance:	up to <b>41 dB</b>

### Typologies

- Single, double, triple & quadruple sliding
- Opposed & pocket sliding
- Sliding & fixed
- Hotel type
- Fly screen & sliding shutter incorporated solution



### Technical features

- One frame, all around
- Narrow Interlock concept
- Optimum design for reduced weight
- Single double and triple glazing option - up to 40 mm
- Energy efficiency concepts: Advanced, Improved & Basic

### Hardware

- Slide / Lift & Slide mechanism
- Max. sash weight (for Slide mechanism): 200 kg
- Max. sash weight (for Lift & Slide mechanism): 300 kg
- On demand: Max. sash width/height up to 3300 mm/3300 mm
- On demand: up to 400kg ( for Lift & Slide mechanism)

### Surface treatment options

- RAL colours
- ETEM colours
- Anodising
- Wood effects
- Quality Standards:
  - QUALICOAT
  - QUALANOD
  - QUALIDECO

### Production certificates

- EN ISO 9001
- EN ISO 14001
- OHSAS 18001

## PRODUCTS

# Architectural systems

## SLIDE&FOLD SYSTEM ALCF39

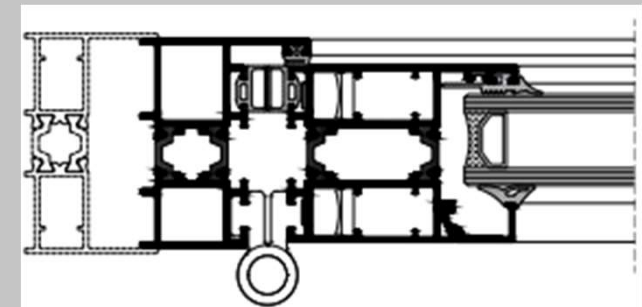
### • DOORS & WINDOWS

SELECTION depending on **operation:**

- 1 OPENING DOOR/FOLDING SASHES
- ALL FOLD SASHES TO ONE WAY
- FOLDING SASHES BOTH WAYS



ALCF39



### Performance

Air Permeability:	up to <b>Class 4</b>
Watertightness:	up to class <b>4A</b>
Resistance to wind load:	up to class <b>C1</b>
Thermal transmittance (U <sub>f</sub> ):	from <b>2.7 W/(m²K)</b>

### Typologies

- Sliding and folding doors - windows
- Inwards opening
- Limitless combinations between sash batches
- Rectangular



### Technical features

Straight line profiles
Fixed frame (min. depth): 59 mm
Sash frame (min. depth): 50mm
Sash profile height: 65 mm
Single, double glazing option
Glazing infill range: 6 ÷ 34 mm
Max.sash width: 1000 mm
Max.sash height: 2800 mm

### Hardware

Euro groove
Max. leaf weight: 110 kg
Anodised aluminium and stainless-steel accessories

### Surface treatment options

RAL colours
ETEM colours
Anodising
Wood effects
Quality Standards:
- QUALICOAT
- QUALANOD
- QUALIDECO

### Production certificates

- EN ISO 9001
- EN ISO 14001
- OHSAS 18001



## PRODUCTS

# Architectural systems

## OPERABLE SYSTEM ALC75

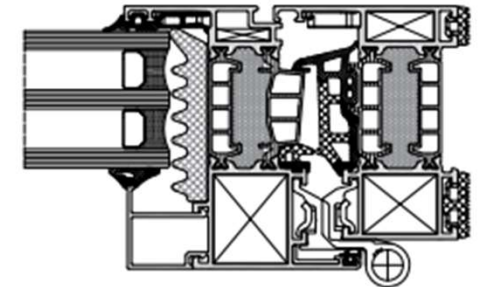
### • DOORS & WINDOWS

SELECTION depending on **operation**:

- TOP/BOTTOM HUNG
- TILT / TURN
- FIXED FRAME
- SPECIAL COMPONENTS



ALC75



### Performance

Air Permeability:	up to <b>Class 4</b>
Watertightness:	up to class <b>E1500</b>
Resistance to wind load:	up to class <b>C5</b>
Thermal transmittance (U <sub>i</sub> ):	from <b>1.2 W/(m²K)</b>
Acoustic performance:	up to <b>46 dB</b>
Burglar resistance:	up to class <b>RC2</b>

### Typologies

- Turn, tilt & turn, tilt, projecting, folding, fixed, parallel sliding, door-height window
- Single & double leaf
- Rectangular, variable angle & bended



### Technical features

Straight line
Glazing infill : up to 55mm in frame
Double & triple glazing option
Frame depth: 75 mm
Vent depth: 84.5 mm
Min. height ( frame+leaf): 107 mm
Compatible with curtain wall system
Energy efficiency concepts: Advanced, Improved & Basic

### Hardware

Extruded aluminium corners
Eurogroove + PVC groove
Max. vent weight: 170 mm
Concealed hinges
Multiple locking points

### Surface treatment options

RAL colours
Anodising
Wood effects
Quality Standards:
- QUALICOAT
- QUALANOD
- QUALIDECO

## PRODUCTS

# Architectural systems

## OPERABLE SYSTEM ALC45

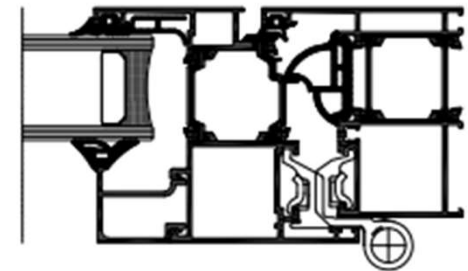
### • DOORS & WINDOWS

SELECTION depending on **operation:**

- TOP/BOTTOM HUNG
- TILT / TURN
- FIXED FRAME
- SPECIAL COMPONENTS



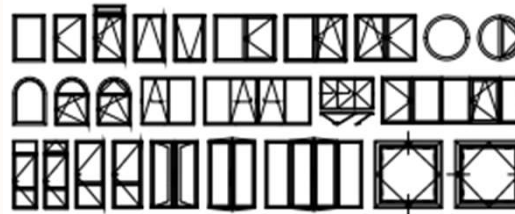
ALC45



Performances	Window	Door
Air permeability:	up to <b>Class 4</b>	up to <b>Class 4</b>
Watertightness:	up to <b>Class E1950</b>	up to <b>Class 5A</b>
Resistance to wind load:	up to <b>Classes AE2500 / C5</b>	up to <b>Class C4</b>
Thermal transmittance (U <sub>f</sub> ):	from <b>1.9 W/(m²K)</b>	from <b>2.1 W/(m²K)</b>
Acoustic performance:	up to <b>50 dB</b>	
Burglar resistance:	up to <b>Class WK2</b>	up to <b>Class WK2</b> (one leaf)

### Typologies

- Turn, tilt & turn, tilt, projecting, folding, pivoting, fixed, parallel sliding
- Inwards & outwards opening
- Single & double leaf
- Rectangular, variable angle & bended



### Technical features

Fixed frame ( min. depth): 60 mm  
 Sash frame ( min. depth): 67.5 mm  
 Min.height of window/door: 82.5 mm/97.5 mm  
 Straight & curved profiles  
 Smoke control doors  
 Hidden vent  
 Single, double & triple glazing option  
 Glazing infill: up to 40 mm in frame  
 Max. vent width: 1600 x 1600 mm  
 Max. vent height: 950 x 2300 mm  
 Energy efficiency concepts: Advanced, Improved & Basic

### Hardware

Eurogroove & PVC groove  
 Max. leaf weight: 140 kg  
 Concealed, external and bridge hinges

### Surface treatment options

RAL colours  
 ETEM colours  
 Anodising  
 Wood effects  
 Quality Standards:  
 - QUALICOAT  
 - QUALANOD  
 - QUALIDECO

### Production certificates

■ EN ISO 9001  
 ■ EN ISO 14001  
 ■ OHSAS 18001

## PRODUCTS

# Architectural systems

## DOOR SYSTEMS ALC75

### • DOORS & WINDOWS

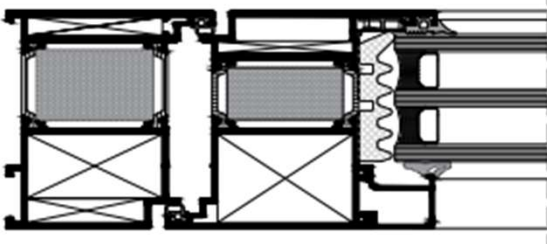
SELECTION depending on **operation**:

- INSWING
- OUTSWING

SELECTION depending on **threshold**:

- Regular
- Low threshold (ADA compliant)
- Automatic

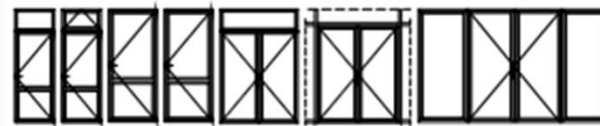


	
<b>Performance</b>	
Air Permeability:	up to <b>class 3</b>
Watertightness:	up to <b>class 3A</b>
Resistance to wind load:	up to <b>class C5</b>
Burglar Resistance:	up to <b>RC3</b>

## ALC75 ENTRANCE DOOR

### Typologies

- Single side door opening with or without fanlight and/or bottom hung casement
- Inward & outward opening
- Single & double leaf
- Rectangular



### Technical features

Glazing infill range: up to 55 mm
Double & triple glazing option
Frame depth: 75 mm
Leaf depth: 75 mm
Leaf-frame width: 148 mm
Compatible with curtain wall system
Energy efficiency concepts: Advanced, Improved & Basic
Anti B-metal polyamide

### Hardware

Door sill area is sealed using dedicated door sealing system
Max. door weight: 200 kg
Concealed, external and bridge hinges
Multiple locking points

### Surface treatment options

RAL colours
ETEM colours
Anodising
Wood effects
Quality Standards:
- QUALICOAT
- QUALANOD
- QUALIDECO

## PRODUCTS

# Architectural systems

## SLIDING SYSTEM SCHUCO ASS50

### • DOORS & WINDOWS

SELECTION depending on **operation**:

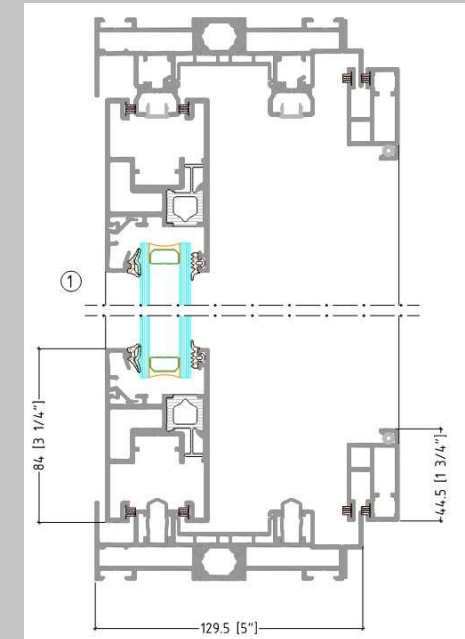
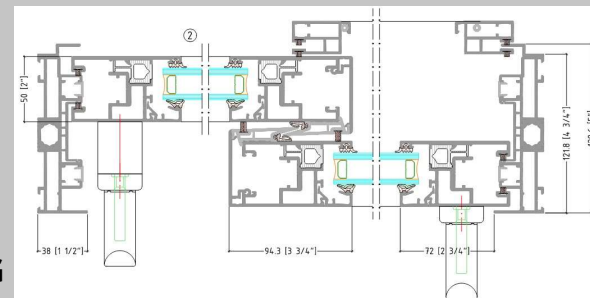
- Sliding
- Lift & Sliding (LS)

Selection depending on **rail**:

- Regular
- Flat rail



ASS50 SLIDING



Maximum Height	3000mm
Maximum Width	3000mm Per Panel
Maximum Weight	400kg Per Panel

FRAME DEPTH	120mm/185mm
GLAZING THICKNESS	8mm - 32mm
GLAZING METHOD	Beaded
SECURITY	Class BC2

PERFORMANCE	
U-VALUE	From 1.6 W/m²K
AIR PERMEABILITY	Class 4
WATER TIGHTNESS	Class 9A
WIND RESISTANCE	Class C4/B4



**NEW !!!**

## PRODUCTS

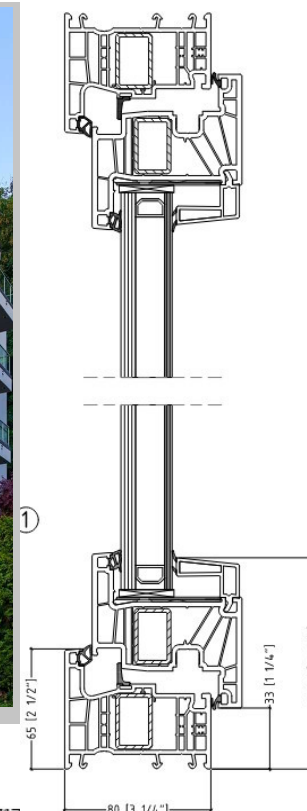
# Architectural systems

## REHAU FIPRO FIBERGLASS REINFORCED PVC

### • DOORS & WINDOWS

#### ADVANTAGES :

- 33% BIGGER SIZES due to fiber glass reinforcement
- Elimination of use of steel reinforcement for normal sizes- less weight
- Wide range of colors to resemble aluminum look – combination of RAU FIPRO and Aluminum systems in the same project !
- Fast lead times
- Competitive cost



Energy Efficiency: Uf 1 W/ m2K basic edition

Sound Insulation up to Rw=48 dB per DIN EN ISO 717

Anti-burglar protection up to RC3 according to DIN EN 1627

Air permeability according to DIN EN 12207 - Category:4

Water permeability according to DIN EN 12208 - Category:9A

Wind resistance according to DIN EN 12210 - Category:B5/C5

Resistance to transverse stresses according to DIN EN 13115 - Category: 1

Resistance to use according to DIN EN 12400 - Category: 3

## PRODUCTS

# Architectural systems

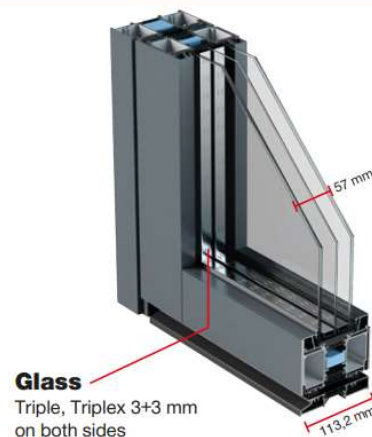
## DOOR SYSTEMS SWING DOORS- PIVOT DOORS

SELECTION depending on **TYPE:**

- VARIETY OF TYPES, STYLES & FINISHES
- HEIGHT UP TO 4 METERS
- HARDWARE OPTIONS
- BIOMETRIC HARDWARE
- AUTOMATIONS



**PIVOT SYSTEM**



**Glass**  
Triple, Triplex 3+3 mm  
on both sides

### Basic Dimensions

Type: Single Door	Width	Height
	Up to 140 cm	Up to 250 cm
	141 to 160 cm	Up to 250 cm
	161 to 180 cm	Up to 250 cm
	181 to 200 cm	Up to 250 cm
	Width	Height
	Up to 140 cm	251 to 300 cm
	141 to 160 cm	251 to 300 cm
	161 to 180 cm	251 to 300 cm
	181 to 200 cm	251 to 300 cm

**MINIMUM DIMENSIONS:** W 140 X H 220 cm - **MAXIMUM DIMENSIONS:** W 200 X H 300 cm

### Other available door types

Single Door with one side panel	Single Door with two side panel	Single Door with three side panel	Single Door with central hinge	Double Door

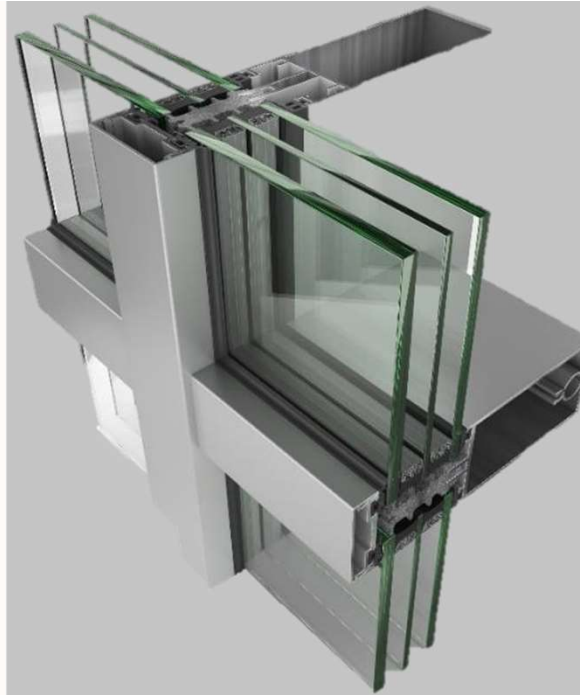


## PRODUCTS

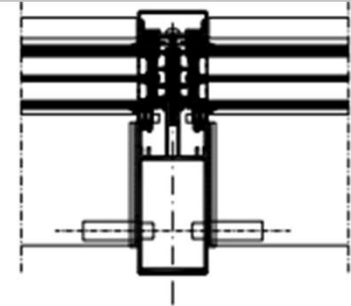
# Architectural systems

## CURTAIN WALL SYSTEM

### • FAÇADE SYSTEMS



**ALCW50**



#### Performance: façade

Air permeability:	Class <b>AE</b>
Watertightness [Static]:	Class <b>R7</b>
Watertightness [Dynamic]:	<b>200 Pa / 600 Pa</b>
Resistance to Wind Load [Design Load]:	up to <b>± 1.6 kN/m²</b>
Resistance to Wind Load [Safety Load]:	up to <b>± 2.4 kN/m²</b>
Impact Resistance:	up to Classes <b>IS / E5</b>

#### Performance: general

Thermal Transmittance [U <sub>f</sub> ]:	from <b>1.6 W/(m²K)</b>
Sound insulation:	up to <b>47dB</b>
Burglar Resistance:	up to Class <b>WK4</b>
Bullet Resistance:	up to Class <b>FB4 NS</b>
Moisture Penetration:	<b>I<sub>reg</sub> = 5,2%</b>
Adhesion Test (ETAG 002-1):	<b>PASS</b>
Ageing Behavior (EN 1279-2):	<b>PASS</b>

#### Typologies

- Fully capped (wide range of facecaps options)
- Horizontal cap with flush
- Vertical cap with flush
- Four-sided structural silicone glazed
- Vertical, slanting, polygonal level curtain walls, pyramids and cupolas

#### Technical features

- Straight line profiles
- Glazing infill range for façade: Double and Triple glazing options
- Glazing infill range for opening: Double and Triple glazing options
- Max concealed vent weight for opening: 200 kg
- Roof window with smoke exhaust
- Exterior finishes - cover cap or silicone gap

#### Hardware accessories

- Integration of sunshade
- EPDM gaskets
- Compatible with all ETEM aluminium systems

#### Surface treatment options

- RAL colours
- ETEM colours
- Anodising
- Wood effects
- Quality Standards:
  - QUALICOAT
  - QUALANOD
  - QUALIDECO

#### Production certificates

- EN ISO 9001
- EN ISO 14001
- OHSAS 18001

## PRODUCTS

# Architectural systems

## OTHER PRODUCTS

**ALUCO** can also **supply** a wide range of **other solutions** and **systems**, project specific or not, with the aim to be a one-stop-shop for all your building envelope needs and not only, such as :

- Window Wall system
- Cladding solutions and materials
- Fly Screens
- Security doors/special custom entrance doors
- Shading systems
- Partitions
- Hardware/accessories
- Our extensive sourcing network in Europe and beyond can find a solution

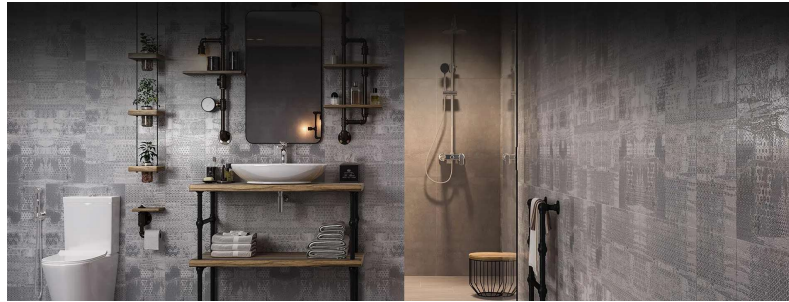


PRODUCTS

# BUILDING MATERIALS

## PORCELAIN TILES AND MOSAIC TILES

**ALUCO IS AN OFFICIAL REPRESENTATIVE** OF MANUFACTURING FACILITIES PRODUCING PORCELAIN AND MOSAIC TILES, AT A WIDE RANGE OF STYLES, SIZES AND TIER1 QUALITY, PROVIDING RELIABLE, MODERN AND VFM SOLUTIONS TO YOUR MARKET.





# Installation & Technical support

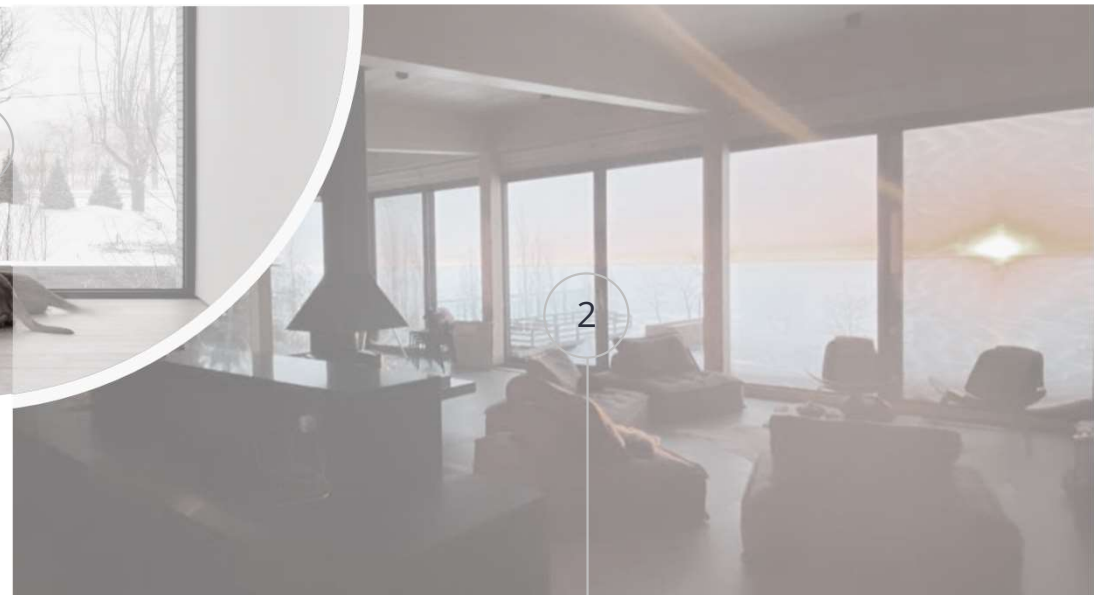
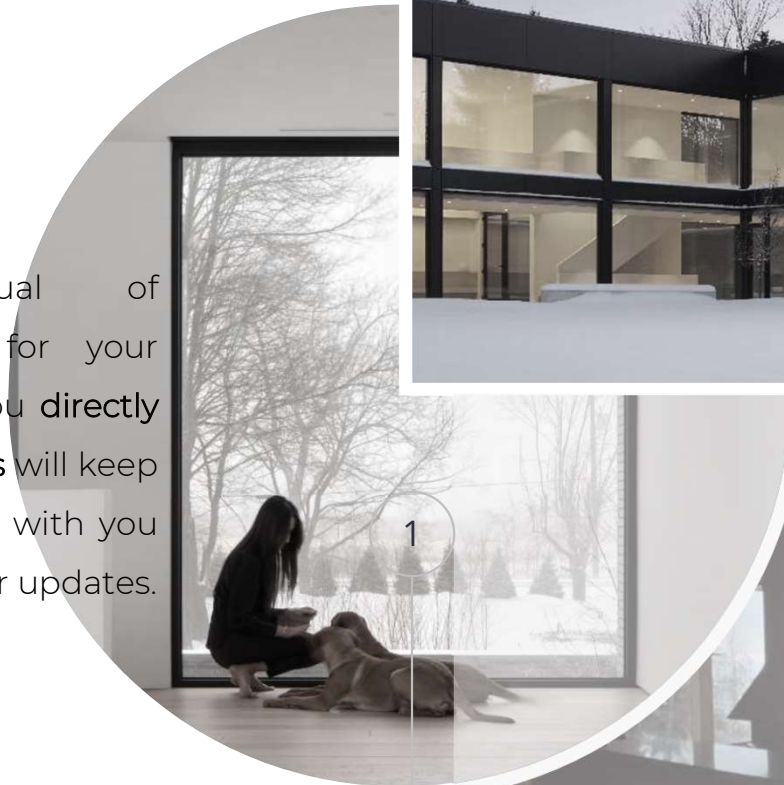
ALUCO can support your installation in various locations. We will make available our **factory engineers** and **certified installers** upon agreement. They can be your on-site **consultants** throughout the process. We want to **ensure** our clients are comfortable handling, assembling, and operating all of our products.

**Technical support** is also available via telecom, Zoom, email, etc. Just call us and we will be there for you.



# Maintenance & After sales service

A comprehensive manual of recommended **maintenance** for your products will be provided to you **directly from the factory**. The **sales teams** will keep an **open line of communication** with you and your project through regular updates.



# Production & Quality

Our **constant** goal is to deliver quality products of superior technical and aesthetical characteristics on time.

Our **Supply chain** including vendors, partners and affiliates which are always audited ,monitored and **enriched through ALUCO experienced staff** so as to minimize risk and guarantee consistency and state of the art manufacturing and services



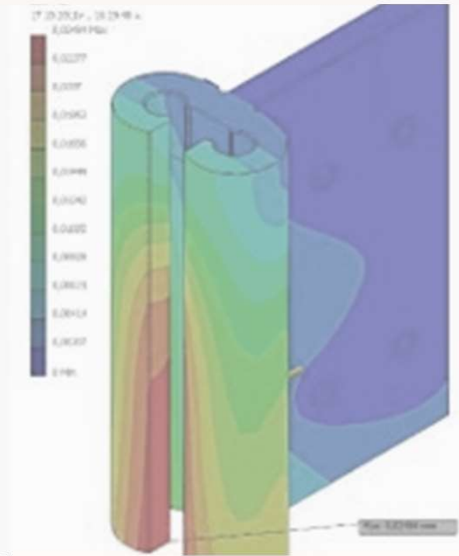


# Engineering Design R&D



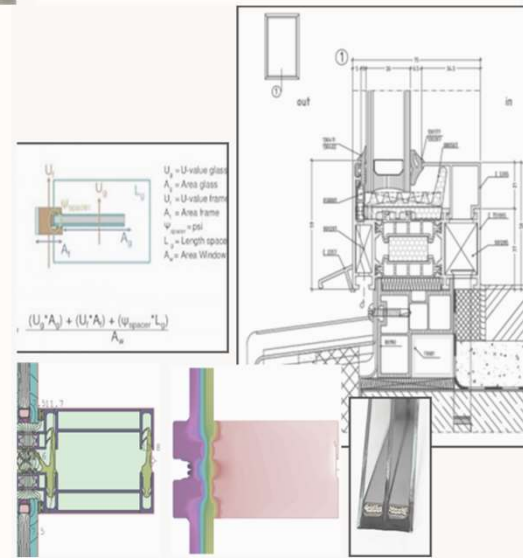
## custom solutions

Our team can source custom engineered solutions through our network of Engineers and/or do in house relevant work.



## experience

Our experienced staff, through international collaborations and close cooperation with Tier1 system houses of Europe and top engineers, ensure that we stay always on the forefront of trends in our field and monitor R&D breakthroughs.



## certifications

We make sure that all of the products that we use have obtained high international certifications and our priority is to have them tested and applied in worldwide projects

# Energy Conservation & sustainability

In ALUCO we care for the environment, adopt habits and choose the products we use as well as partnerships we make in **2 directions**:

Trying to have an, as much as possible, **lighter impact** to environment by supplying **long-lasting quality products** of a highly **recyclable** nature which are produced in a sustainable way.

Use products that **contribute** significantly to **energy conservation** and thus create beneficial results to both energy expenditures and the environment



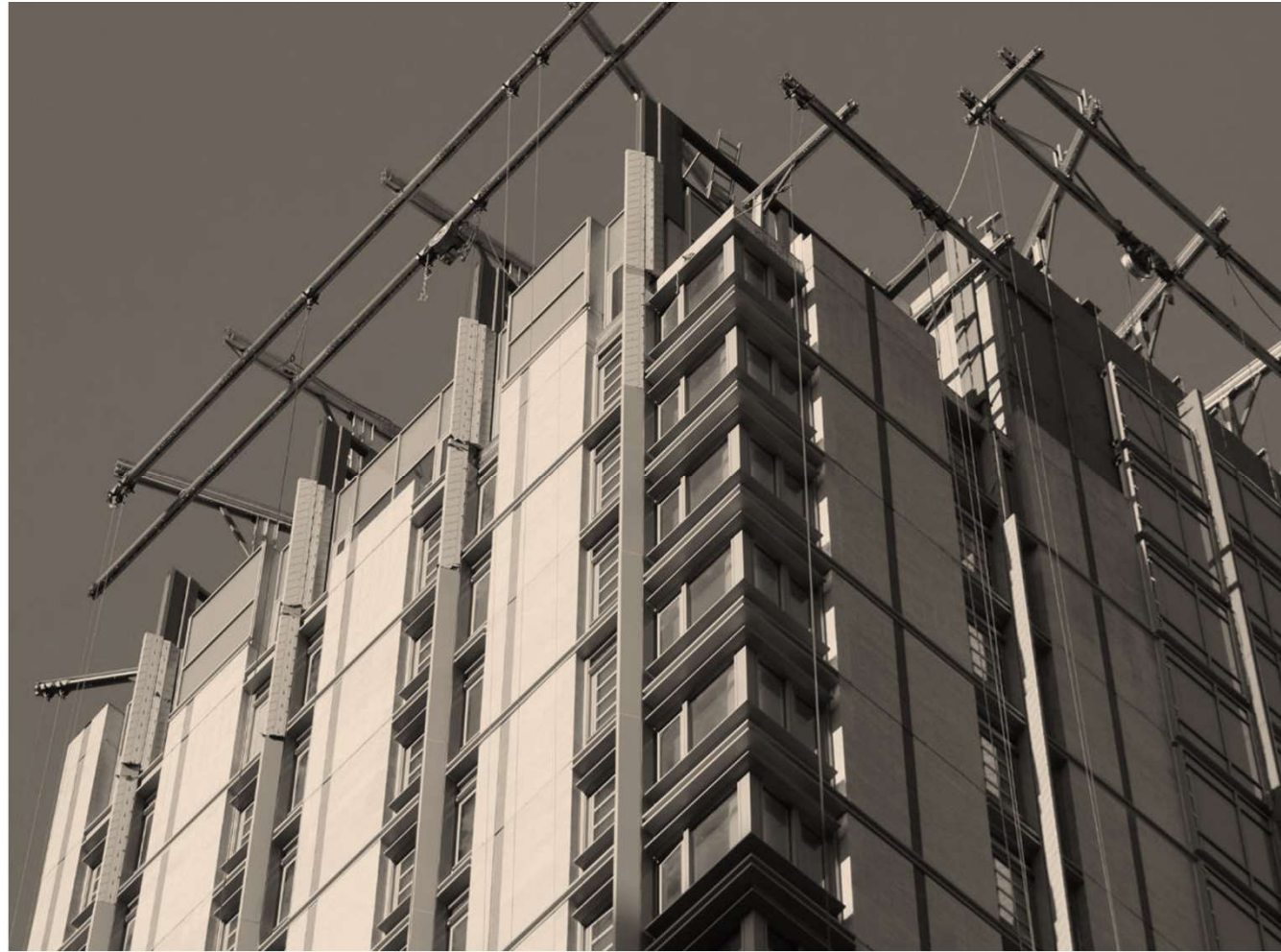


## PROJECTS

# Experience in execution

## SOME PROJECTS THAT OUR TEAM HAS BEEN INVOLVED

- ALUCO has a vast **experience** in the **execution** of a variety of projects, from analyzing project needs, finding suitable solutions, up to delivering and installing the final product with its own highly skilled teams.
- ALUCO **operates** with the philosophy that a **project is successful** only if all the links of the chain are in place..



RESIDENTIAL

## Experience in execution

### ARCHITECTURAL SYSTEMS IN PROJECTS

- Private residence in Canada  
Minimal design systems





RESIDENTIAL

## Experience in execution

### ARCHITECTURAL SYSTEMS IN PROJECTS

- Private residence in Canada  
Architectural systems





RESIDENTIAL

## Experience in execution

### ARCHITECTURAL SYSTEMS IN PROJECTS

- Private residence in Canada  
Minimal Design systems



RESIDENTIAL

## Experience in execution

### ARCHITECTURAL SYSTEMS IN PROJECTS

- Private residence in Canada  
Architectural systems





RESIDENTIAL

## Experience in execution

### ARCHITECTURAL SYSTEMS IN PROJECTS

- Private residence in Canada  
Architectural systems



RESIDENTIAL

## Experience in execution

### ARCHITECTURAL SYSTEMS IN PROJECTS

- Private residence in Canada  
Minimal Design systems



RESIDENTIAL

## Experience in execution

### ARCHITECTURAL SYSTEMS IN PROJECTS

- Private residence in Canada  
Architectural systems





COMMERCIAL/MIXED USE

## Experience in execution

### ARCHITECTURAL SYSTEMS IN PROJECTS

- THE FIFTH AVENUE HOTEL- NEW YORK



COMMERCIAL/MIXED USE

## Experience in execution

### ARCHITECTURAL SYSTEMS IN PROJECTS

- 1601 KINGS HIGHWAY- BROOKLYN





COMMERCIAL/MIXED USE

## Experience in execution

### ARCHITECTURAL SYSTEMS IN PROJECTS

- WONDERLOFTS- NEW JERSEY



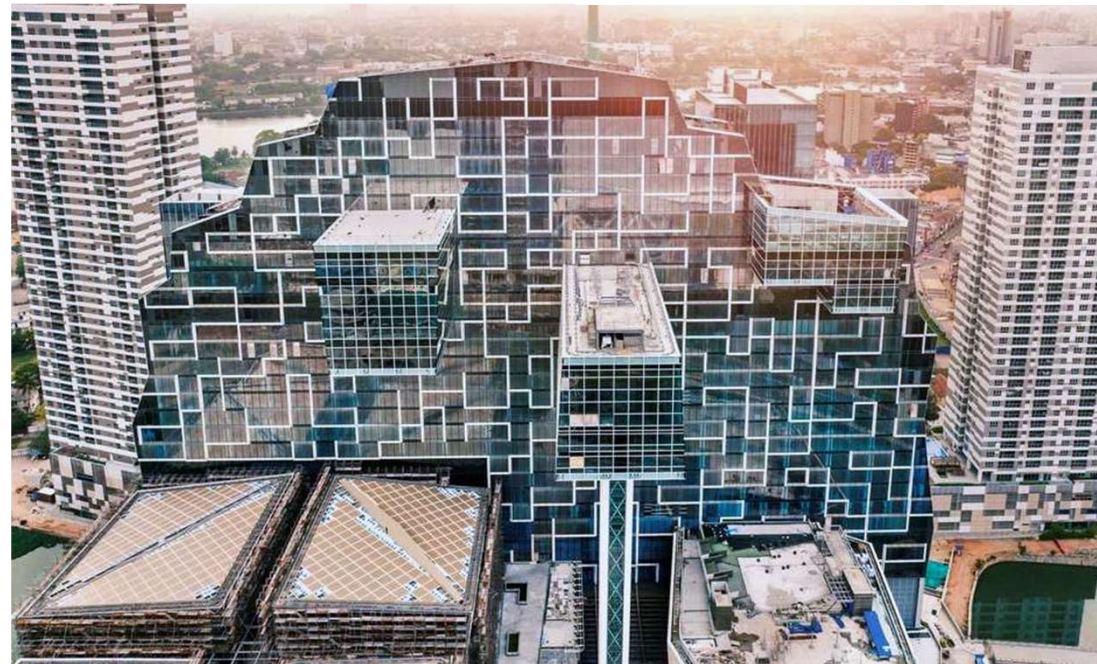


COMMERCIAL/MIXED USE

## Experience in execution

### ARCHITECTURAL SYSTEMS IN PROJECTS

- WATERFRONT INTEGRATED RESORT- COLOMBO SRI LANKA



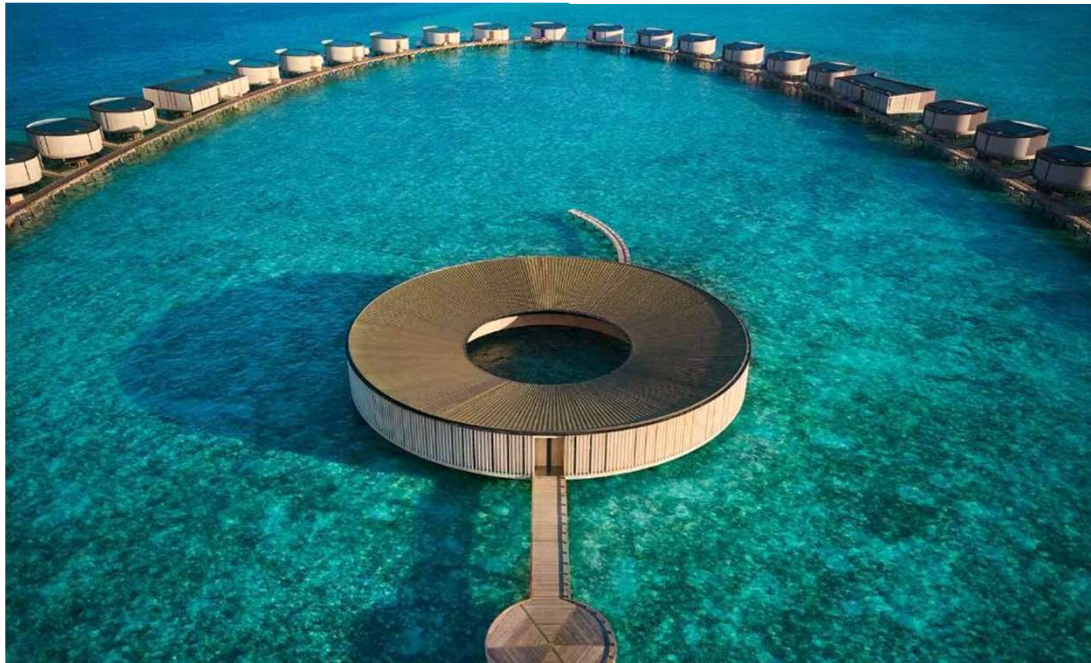


COMMERCIAL/MIXED USE

## Experience in execution

### ARCHITECTURAL SYSTEMS IN PROJECTS

- RITZ CARLTON- MALDIVES





# VISION

To be an international supplier of choice, providing unparalleled **products** and **services** and creating unique experiences for our clients





[www.aluco.gr](http://www.aluco.gr)

**ALUCO GREECE**

63, dragatsaniou str.

18 545 Piraeus

Greece

info@aluco.gr